

Explore America!

Quick Start - Example Search

Attraction Viewing Modes

[List Mode](#)

[Slides Mode](#)

[Thumbnail Mode](#)

State Information Mode

[Opening and Closing State Information Mode](#)

[Viewing the Slideshow in State Information Mode](#)

[Viewing State Videos in State Information Mode](#)

[Viewing Tourism Information in State Information Mode](#)

Search Options In Explore America!

[Restricting the Geographic Area](#)

[Restricting Attraction Categories](#)

[Custom Search](#)

Viewing Photos and Video

[Video Quality](#)

Buttons

Attraction Status Icons

[Beaches](#)

[Camping](#)

[Children's Activities](#)

[Costs](#)

[Dining](#)

[Free Admission](#)

[Handicapped Access](#)

[Hiking](#)

[Tours](#)

Quick Start - Example Search

As an example search, we want to find and view all attractions within a 50-mile radius of *San Deigo, California*. In the upper left of your screen is a **State List Box** containing state names, and directly below this box is the Town List Box which contains the default selection '<All Towns>'. Click on the **State List Box** and scroll to find *California*, then click on the **Town List Box** and scroll to find *San Diego*. You may also type the town name in the town list box. Click on the **GO** button which is located in the upper center of your screen. Your selection of attractions will now be those attractions within a 50-mile radius of San Diego. You may narrow the selection by choosing a category from the **Category List Box** in the upper right-hand portion of your screen, or leave the default '<All Categories>' selected.

Viewing Modes

There are three viewing modes available: **List, Slides, and Thumb**. **List** is the default viewing mode. In **List** mode, to find and view a specific attraction, click on the **Attractions List Box**, located below the viewing mode buttons, and scroll to select an attraction. You will note descriptive information, status icons indicating suitability for children, if there is a charge, handicap access, tours, food, hiking or beaches. You will also note **Time, Contact, Locator and Next** buttons. Click the **Time** button for more detailed schedule information. Click **Contact** for address and telephone number of the attraction. Click the **Locator** button and a map will pop up indicating the geographic location of the attraction within the state. On the left side of the screen is the **Multimedia Display Area**. Click on the Photo or Video icon to view photos and/or videos for the attraction.

Click on the **Slides** button to view a slide show of attractions within our selected area. In the **Slides** viewing mode, you will note several buttons on the lower left side of the screen. Click **Pause** to pause the slide show. Click **Next** to see the next slide. Click **Options** to set your viewing options. Click **Resume** to resume the slide show. Click on a slide to see that attraction in **List** mode.

Click on the **Thumb** button to view thumbnail photos of attractions within our selected area. In **Thumb** viewing mode you can click on the **Next** button for more thumbnails, or **Previous** to go back. Click on a thumbnail photo to view that attraction in **List** mode, or **Cancel** to cancel the **Thumb** viewing mode.

Bookmarking, Printing and Viewing Media

On the lower right of your screen are **Bookmark, Print, Media, Help** and **Exit** buttons. Click on **Bookmark, Add** and **OK** to mark or tag the current attraction for ease in returning to the attraction later. To return to a bookmarked attraction, click on the **Bookmark** button, click on the tagged attraction name and select **GoTo** to go to that attraction.

Click on the **Print** button to print information on the currently selected attraction. Click on the **Media** button for a list of multimedia options. To view videos, click on the **Videos** button in the **Multimedia Options** window and select a video from either the state video or attraction video list.

State Information

If you wish to view [state slides](#) and [state information](#) for California, click on the [state map button](#) located in the upper left portion of your screen.

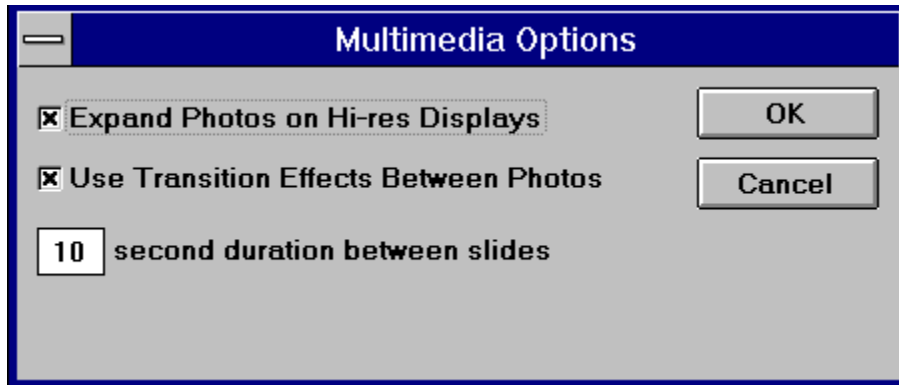
List Viewing Mode

The **List** viewing mode is the standard viewing mode. In the **List** mode you can scroll through a list of attractions that match the criteria you specified in your search and select an attraction you want to view from that list. In **List** mode, descriptive information, photos and videos are displayed.



Slides Viewing Mode

If you click the **Slides** button on the upper right of your screen, a slide show of selected attractions will be displayed. A series of photos will appear on your screen every few seconds. You can set the number of seconds between 'slides' by clicking the **Options** button on the lower left of your screen (down to a minimum of 5 seconds). Once **Options** has been selected a **Multimedia Options** window will give you the option to 'Expand Photos on Hi-res Displays' (this will slightly enlarge the photo if your screen display is set at a higher resolution) or 'Use Transition Effects'. Once you have made your selections, dismiss the window by clicking on **OK**.

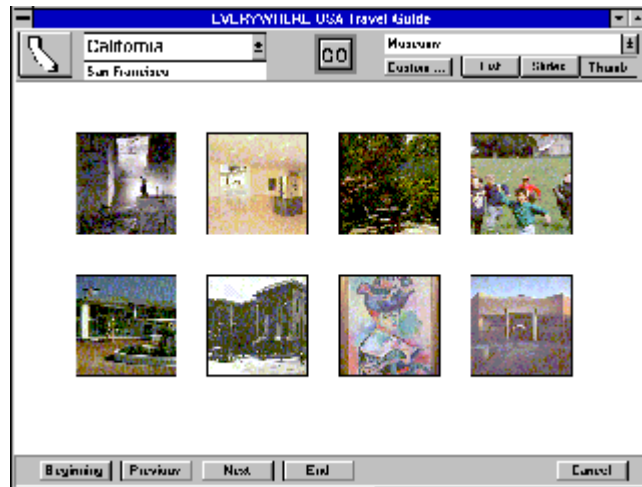


Click the **Pause** button to pause the slide show, **Resume** to resume the slide show, **Prev** to see the previous slide, or **Next** to see the next slide.

To return to **List** viewing mode, simply click on a 'slide'.

Thumbnail Mode

Click the **Thumb** button to display small 'thumbnail' photos taken from the attractions in the current selection. Click **Next** to see the next screen of thumbnails, **Previous** to see the previous screen, **Beginning** to go to the first screen of thumbnails and **End** to go to the last screen. Click on a thumbnail to view the attraction information for the thumbnail in **List** viewing mode.



Opening and Closing State Information Mode



In the upper left-hand corner of your screen you will note a button with a state map of your selected state. Click on this button to open **State Information Mode** for the state. This will automatically start the state slide show. To close **State Information Mode**, click on the **Return** button located in the lower right of your screen.

Viewing Tourism Information in State Information Mode

To open **State Information Mode**, click on the state map button in the upper left-hand corner of your screen. This will open the state slide show for the state. To view visitor information, click on the **Visitor Information** button in the upper right of your screen. Click on either the **State Info** or **Regional Info** button to view state and regional address information. Click on the **Prev** or **Next** buttons to see the previous or next agency. To cancel and return to the state slide show, click on the **Cancel** button. To exit **State Information Mode**, click on the **Return** button in the lower right of your screen.

Viewing the Slide Show and State Videos in State Information Mode

To view the *Slide Show* for your selected state, click on the button with the state map located in the upper left-hand corner of your screen to open **State Information Mode**. A state slide show will automatically start. A series of photos will appear on your screen every few seconds.

You can set the number of seconds between 'slides' by clicking the **Options** button on the lower left of your screen (down to a minimum of 5 seconds). Once **Options** has been selected a **Multimedia Options** window will give you the option to 'Expand Photos on Hi-res Displays' (this will slightly enlarge the photo if your screen display is set at a higher resolution) or 'Use Transition Effects'. Once you have made your selections, dismiss the window by clicking on **OK**.

Click the **Pause** button to pause the slide show, **Resume** to resume the slide show, **Prev** to see the previous slide, or **Next** to see the next slide.

To cancel the Slide Show, click on the Return button located in the lower right of your screen.

If there are state videos for the state, video icons will be displayed in the lower portion of your screen. To view a video, click a video icon.

Restricting the Geographic Area

You can restrict your search for attractions to a specific state or to a 25-, 50-, 100- or 250-mile radius of a selected town within a state.

To select a state, click on the **State List Box** located in the upper left of your screen and select the state you wish to search. You may use the default of '<All Towns>' within the selected state or you may select a town and a search radius. To select a town and a radius, type in the town name in the **Town List Box** located directly below the **State List Box**, or scroll the **Town List Box** and select a town. Next, select a search radius from the list to the right of the drop down list of towns. To start the search for your selected state and town, click on the **GO** button located in the upper middle of your screen.

Restricting Attraction Categories

There are several categories of attractions to choose from in Explore America! You may accept the default of '<All Attractions>' within your selected geographic area or you may choose from:

- Arts, Music and Culture
- Fairs, Festivals and Tours
- History
- Museums
- Parks, Gardens and Forests
- Science and Nature
- Sports and Amusements

To select a category, first select the state and town you want to search and press **GO**. Click on the **Category List Box** located in the upper right-hand side of your screen, to drop down a list of the above categories. Click on a category from the list and your search has been narrowed to all attractions within that category in your selected geographic area. To select an attraction, simply click on the **Attraction List Box** located under the **Custom**, **List**, **Slides** and **Thumb** button and select an attraction.

Custom Search

In addition to the ability to narrow your search geographically and by category, Explore America! allows you to further define your search criteria.

Located on the upper right-hand side of your screen is a **Custom** button. Click on this button to display a *Custom Search Panel* which allows you to define your search criteria.

The image shows a 'Custom Search Panel' interface. It features a grid of eight category buttons: 'Free Admission' (dollar sign icon), 'Children's Activities' (family icon), 'Beaches' (sun and waves icon), 'Tours' (person with map icon), 'Handicapped Access' (wheelchair icon), 'Dining' (fork and knife icon), 'Camping' (tent icon), and 'Hiking' (hiker icon). Below the grid is a text box containing 'Select attractions with: Free Admission and Camping'. To the right of this box are 'And' and 'Or' buttons. At the bottom, there is an 'Open on' dropdown menu set to 'Saturday', a '<All Months>' dropdown menu, a checked checkbox for 'Include 'Not Sure' Activities', and a 'Hide' button.

Example: We want to find all attractions in your geographic area that are free, have camping facilities and are open year-round on Saturdays. Click on the 'Free Admission' and 'Camping' icons, select 'Saturday', leave the default months to '<All Months>', and click on 'And' as we want the search to be for 'Free Admission' AND 'Camping', etc. Selecting "Include 'Not Sure' Activities" will include all attractions that do not specifically state the reverse of our selections. To start the search click on the **GO** button located in the upper middle of your screen.

Buttons

GO Button

Attraction Description Buttons

Time

Contact

Locator

Prev

Next

System Buttons

Bookmark

Print

Media

Help

Exit

View Mode Buttons

List

Slides

Thumb

State Mode Button

Custom Button

Time Button - Click for more detailed schedule information for an attraction.

Contact Button - Click for address and telephone numbers for the attraction.

Locator Button - Click for a pop up map showing relative geographic location of the attraction.

Prev Button - Click to see the previous attraction matching your selection criteria.

Next Button - Click to see the next attraction matching your selection criteria.

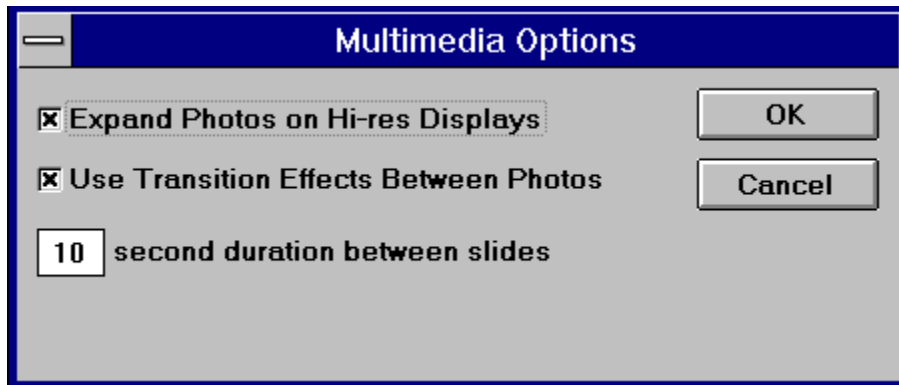
Bookmark Button - Click to tag an attraction. To review a tagged attraction, simply click the **Bookmark** button, select the tagged attraction you want to return to from the tagged attraction list and click the **GoTo** button.

Print Button

Explore America! gives you the option to send attraction text information to your printer or to the *Windows* clipboard.

To print, click the **Print** button located in the lower right of your screen, and select the print option you prefer.

Media Button - Click to see a list of multimedia options.



Options:

Expand Photos on Hi-Res Displays

This will expand photos slightly if your screen display is set to a higher resolution.

Use Transition Effects Between Photos

Turn the transition effects between photos on or off.

Duration between slides

Set the number of seconds between slides (minimum is 5 seconds).

Help Button - Click for on-line help.

Exit Button - Click to exit Explore America!

GO Button -- Click this button each time you define new search selection criteria.





Beaches -- If this icon is displayed, beaches are available at the attraction.



Camping -- If this icon is displayed, camping is available at this attraction.



Children's Activities -- If this icon is displayed, this attraction is suitable for children.



Free Admission -- If this icon is displayed, admission is free to this attraction.



Costs -- If this icon is displayed, there are costs involved for this attraction.



Hiking -- If this icon is displayed, hiking is available at this attraction.



Tours -- If this icon is displayed, tours are available for this attraction.



Dining -- If this icon is displayed, food is available at this attraction.



Handicapped Access -- If this icon is displayed, handicapped access is available for this attraction.



No Handicapped Access -- If this icon is displayed, there is no handicapped access for this attraction.

Viewing Photos and Video

In **List** Mode the left portion of your screen is where photos and video are displayed. When an attraction is selected, photo and video buttons will appear at the bottom of the left side of the screen. Use these to select additional photos or video.



Click to view a photo.



Click to view a video.

You may also view videos by clicking on the **Media** button on the bottom of the right side of your screen.

Once video is selected a *Video Display* as illustrated below, appears in the *Multimedia Display Area* **play** button to play the video. Click your keyboard **Ctrl** key and the **play** button to play the video fullscreen. Click the **multimedia menu button** for a list of video options including the ability to adjust the volume of the video during play.



Video Quality

The video quality in Explore America! is defined by your video-display board and video-display monitor. Two measurements for quality are video resolution and color reproduction. Resolution is measured by the number of vertical and horizontal dots on your screen, and can range from 640 x 480 pixels to 1280 x 1024. You can change your resolution by changing your display driver in *Windows* setup.

The video clips in Explore America! are designed for best quality display in 256 colors, but will display in 16 colors. The rate and size of the video clips are:

Playback rate: 15 frames/second
Size: 320 x 240 and 240 x 180

Video Play Button



Multimedia Menu Button



Video Quality

The video quality in Explore America! is defined by your video-display board and video-display monitor. Two measurements for quality are video resolution and color reproduction. Resolution is measured by the number of vertical and horizontal dots on your screen, and can range from 640 x 480 pixels to 1280 x 1024. You can change your resolution by changing your display driver in Windows setup.

The video clips in Explore America! are designed for best quality display in 256 colors, but will display in 16 colors. The rate and size of the video clips are:

Playback rate: 15 frames/second
Size: 320 x 240 and 240 x 180

Viewing State Videos in State Information Mode

To open **State Information Mode**, click on the state icon located in the upper left-hand corner of your screen. This will open the state slide show for the state. If there are state videos for the state, video icons will be displayed in the lower portion of your screen. To view a video, simply click on a video icon.

